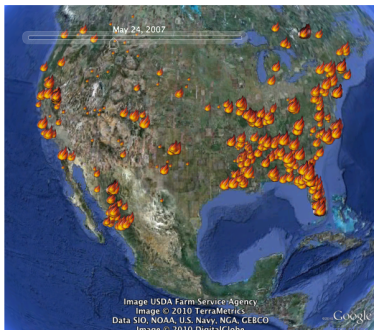
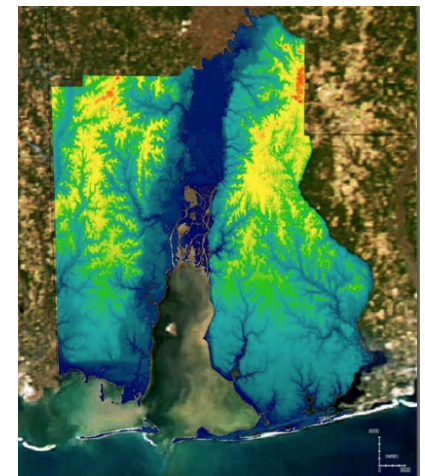


Data Casting for Integration of Applied Science Projects



Ken Keiser and Manil Maskey
Information Technology and Systems
Center
University of Alabama in Huntsville



NASA Applied Science Programs

(John Haynes, Program Manager)

- A.28s
 - A suite of projects that will enhance the Gulf of Mexico region's ability to recover from the devastation of the 2005 hurricanes
- A.40s
 - Integrate NASA Earth science research results into decision-making activities in the Gulf of Mexico region



Interacting Projects

- Promoting interactions between projects
- Small regional extent – Gulf Coast and related southeastern US regions
- Focus on decision support – getting information to end-users



Data Management Issues

- Each project is a data/information producer
- Limited level of IT capabilities/support (in some cases)
- Data/information should be available to a variety of end-user applications and tools
- Should be looking for interoperable access for **visualization**



Data Casting + KML

- Data Casting: Geo-enhanced RSS feeds
- KML: broadly adopted xml wrapper for image (and other) data.



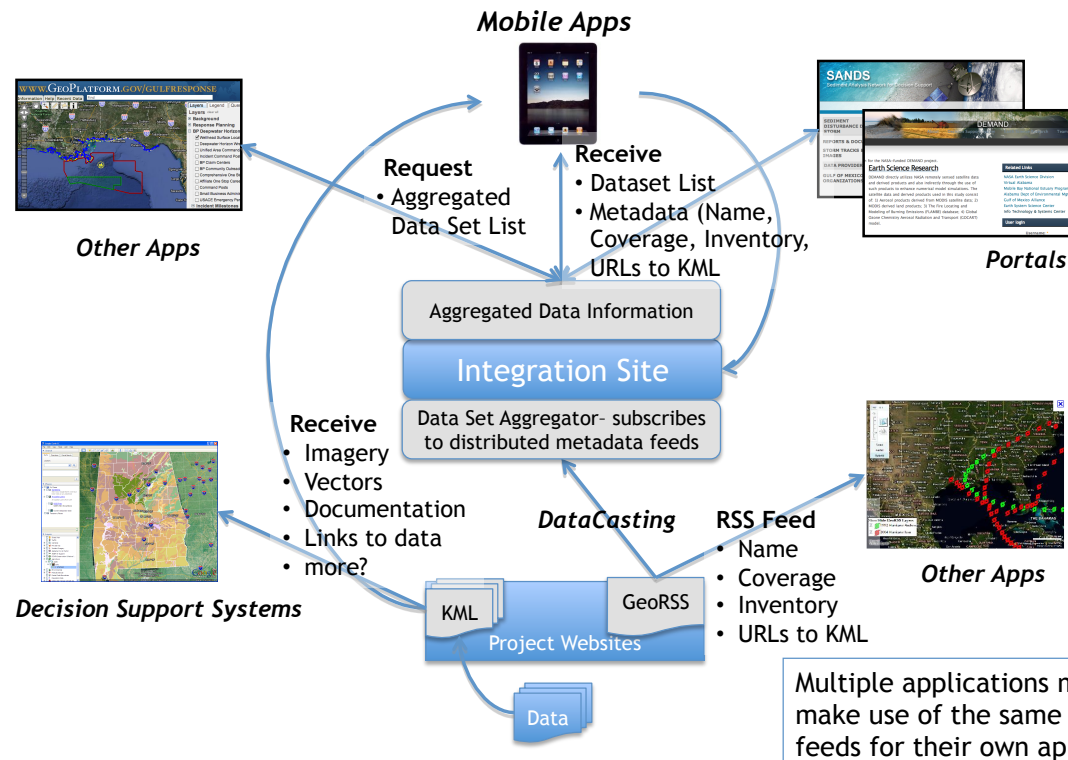
Feed Aggregation

Service(s) to pull together data casts from multiple sources for access by down-stream applications and tools



Putting it Together

Applied Sciences: Integrated Data Visualization




Benefits

- Easy level of technical participation
 - Not easy enough for all data producers yet
- Puts technical burden on application developers (as it should be)
 - Filter feeds for specific purposes
 - Application-specific use of data
- Casts and KML are discoverable on the web for other uses



Example: Cast Aggregation



AIRE – Air Quality Information and Research Environment

Home

Navigation

- Data Comparison
- ▷ Data Visualization
- ▷ Feed aggregator

Feed aggregator

[List](#) [Add category](#) [Add feed](#) [Settings](#)

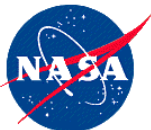
Thousands of sites (particularly news sites and blogs) publish their latest headlines and posts in feeds, using a number of standardized XML-based formats. Formats supported by the aggregator include [RSS](#), [RDF](#), and [Atom](#).

Current feeds are listed below, and new feeds may be added. For each feed or feed category, the *latest items* block may be enabled at the [blocks administration page](#).

[\[more help...\]](#)

Feed overview

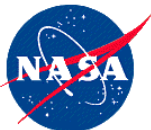
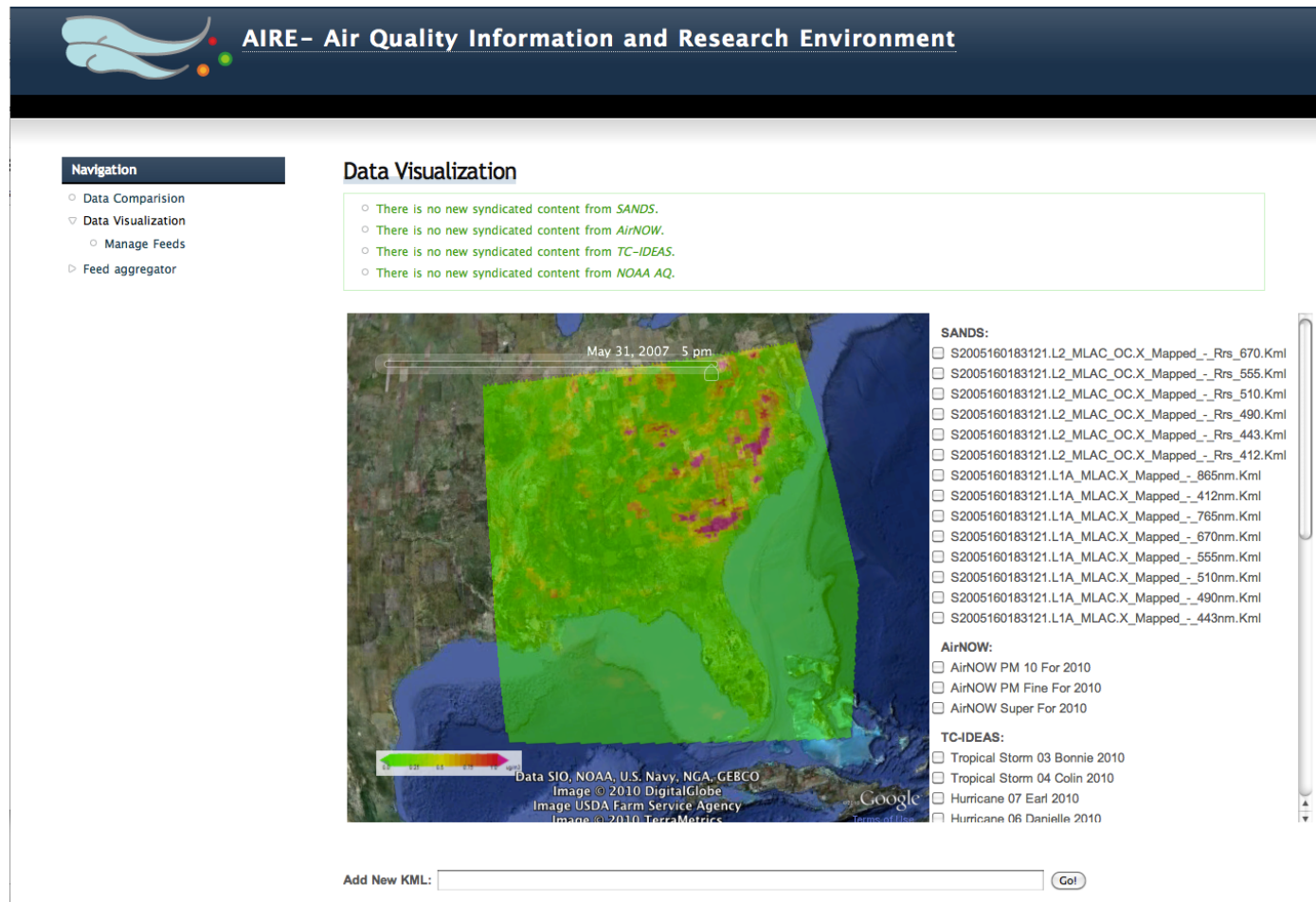
Title	Items	Last update	Next update	Operations		
AirNOW	3 items	9 sec ago	59 min 51 sec left	edit	remove items	update items
NOAA AQ	6 items	9 sec ago	14 min 51 sec left	edit	remove items	update items
SANDS	14 items	9 sec ago	14 min 51 sec left	edit	remove items	update items
TC-IDEAS	19 items	9 sec ago	59 min 51 sec left	edit	remove items	update items



<http://noaaqdev.itsc.uah.edu/drupal/kmlmap/Feeds>



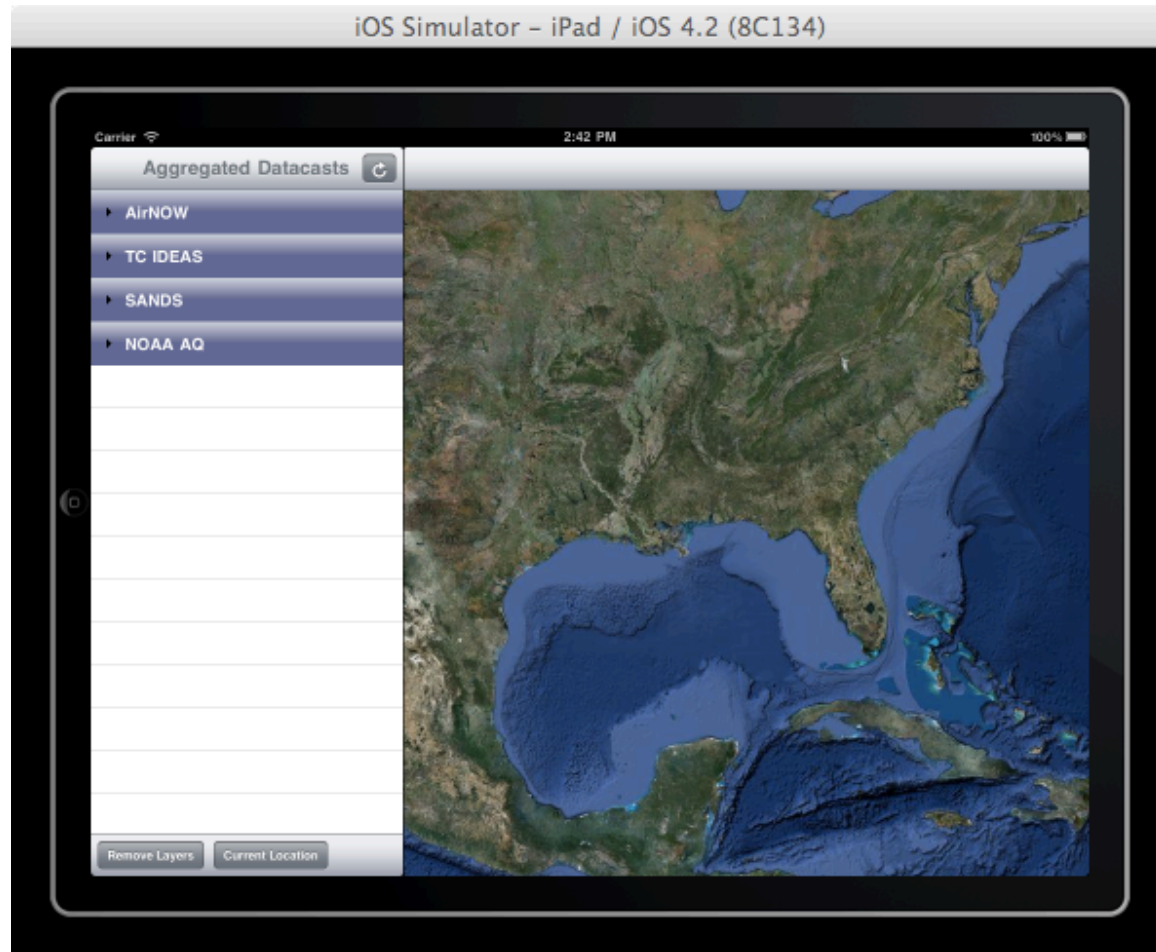
Example: Web Application



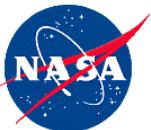
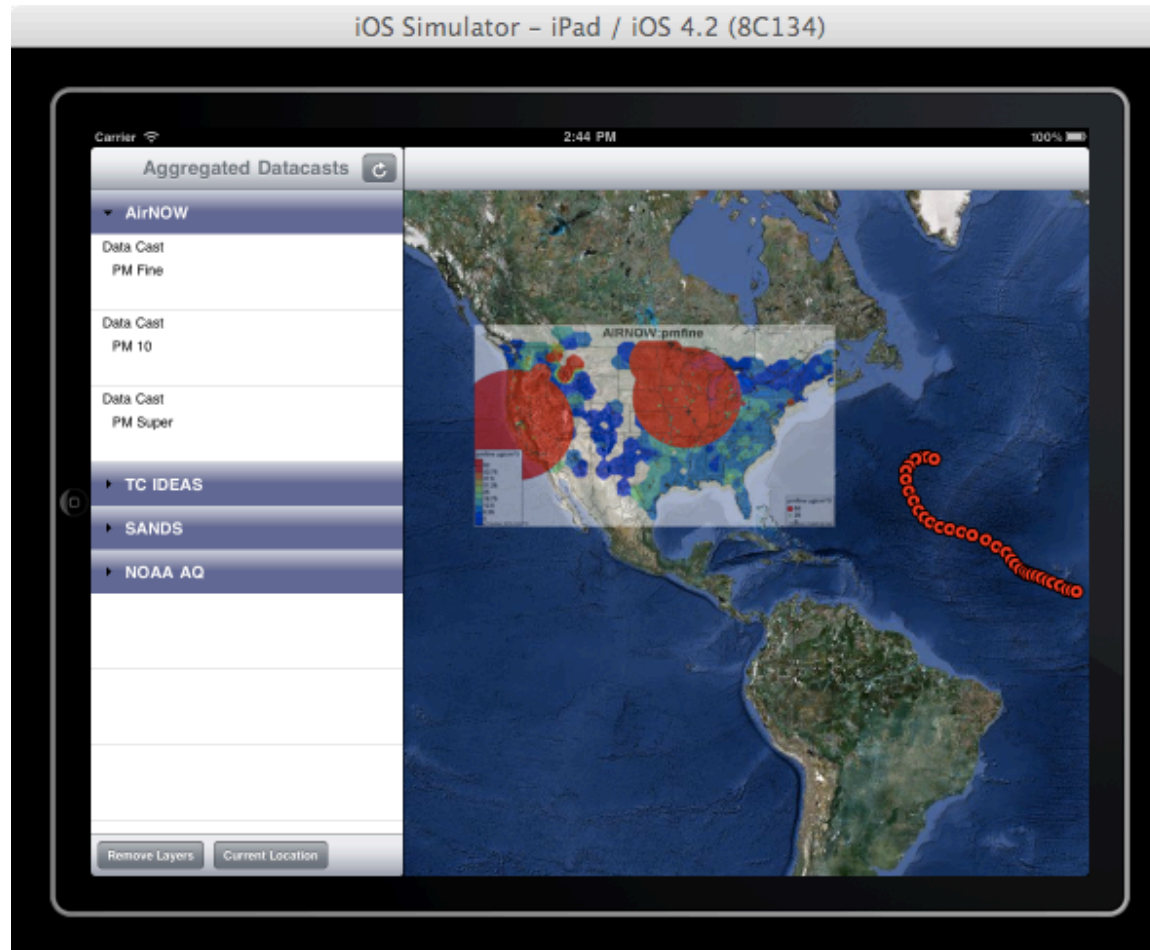
<http://noaaqdev.itsc.uah.edu/drupal/>



Examples: Mobile App



Examples: Mobile App



To Do

- Make it even easier for data producers
 - Data cast authoring tools
 - KML authoring tools
 - Integrated aggregation/registration of casts
- Integrating more cast technologies with applications

